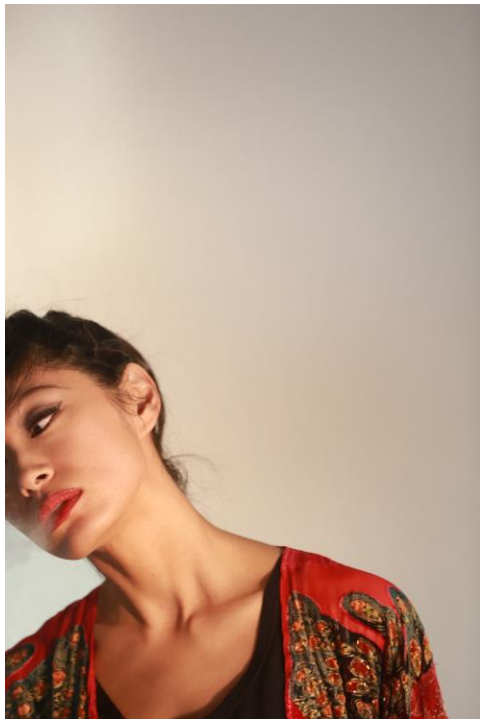


News Release – October 2018

## National experimental music tour launches at MK Gallery this November

*DRIFT* ft. *Kyoka*, *Grischa Lichtenberger*, and *YTAC* - the third commission by *Outlands*, a new experimental music network - begins its national tour at MK Gallery in Milton Keynes on Wednesday 7 November at 8pm.



Fusing heavy electronics, hypno-chaotic grooves and pristine frequency control within a unique, audio-visual environment, *DRIFT* sets forth an intoxicating, hyper-sensory experience.

Part club, part installation, part immersive environment, *Drift* takes shape within a specially constructed space, where motion sensors and microphones monitor the room, the crowd and the performers. The observations are fed to a central 'brain', which responds by projecting fevered machine-dreams back onto people and walls - the audience and the performance influence the visuals; feedback ensues, chaos builds. Inside this generated environment, artists *Kyoka* and *Grischa Lichtenberger* from acclaimed German electronic music record label [Raster](#) will diffuse their visions of experimental dancefloors.

Tour support comes from *YTAC* a key figure of the [EIS HAUS](#) collective.

Simon Wright, MK Gallery's Curator of Public Programmes said "*Over the past year, we have hosted two incredible events as part of the OUTLANDS experimental music touring network. Both brought innovative, internationally acclaimed artists to Milton Keynes for the first time and introduced new musical experiences and ideas to our audiences. DRIFT featuring Kyoka, Grischa Lichtenberger and YTAC, the final tour of the 2018 programme, is perhaps the most ambitious and technically challenging OUTLANDS production to date and we are delighted that we will be launching the tour at MK Gallery on the 7 November. Don't miss out!*"

Tickets cost £10 or £8 in advance from <https://www.mkgallery.org/whats-on/drift/>.

Image: *Kyoka* (Photo credit: *Sylvia Steinhäuser*)

**//ENDS//**

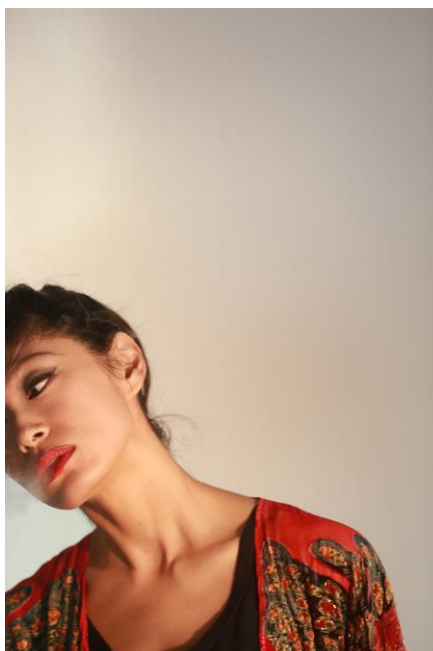
## Notes to Editors

### ABOUT THE ARTISTS

#### DRIFT

DRIFT is an immersive environment developed in collaboration by feral games developers and digital art technologists [wetgenes](#) and [Fuse Art Space](#). Now in its second build version following an original commission by the British Science Festival in 2014, the system is housed within a specially constructed reflective enclosure inside which motion sensors and mics monitor the room, the crowd, the performers, feeding audio and visual observations to an array of processors. The array converts the data to graphics, projecting the output back onto the walls and people. Thus blurring the boundaries between the conventional stage and audience thresholds.

#### KYOKA



(Photo credit: Sylvia Steinhäuser)

Berlin-based composer/producer [Kyoka](#) grew up in Japan, learning piano, flute and shamisen [a three-stringed traditional Japanese instrument] during her childhood and is known for her direct, chaotic musical approach and heavy-rough sound, resulting in a broken pop-beat with experimental yet danceable rhythms. Whilst recording radio shows to cassette, she became attracted by the possibilities of manipulating tape and soon began to use the tape recorder as her toy, cutting, editing and producing her first rough sounds. In 1999, she started to explore the potential of synths/computers, and in 2008, her first mini-album "ufunfunfufu" was released on the onpa)))) label, followed by »2ufunfunfufu« in 2009 and »3ufunfunfufu« as an exclusively digital release. She joined the raster-noton label in 2012, and has progressed to become one of the most exciting, individual and original artists on the label.

## GRISCHA LICHTENBERGER



(photo credit: Sarah Ambrosi)

[Grischa Lichtenberger](#) is an electronic music producer, visual and installation artist living in Berlin. Raised on a remote farm near Bielefeld, Grischa's aesthetic developed from surveying the landscape - not only as a picturesque recreational facility, but as an interaction between the traces of history and the present surroundings. The aggressive tone in his sound design is countered by an emotional depth of the music which observes the introspective moods on the dancefloor and unsettling contemplations in an intimate listening situation. Tumbling between funky, highly energetic beats and trembling melodies, an almost tactile honesty reaches out to the individual listener.

## YTAC

YTAC is the incendiary club electronics project of James Birchall, aka [Rough Fields](#). His first bass-heavy percussion experiments appeared on the Bomb Shop label in 2010; by 2016 YTAC's rave-centric workouts were being launched at high altitude [EIS HAUS](#) parties along the mountainous France/Spain border, and formed the first releases on the EIS HAUS label. The coming months will see the YTAC phenomena explode.

## RASTER

[Raster](#) is a platform and international network for progressive electronic music that overlaps the border areas of pop, art and science. One half of former German electronic music record label »raster-noton« established in 1999, Raster brings artists Grischa Lichtenberger and Kyoka from their roster to DRIFT.

## OUTLANDS TOUR #3 DATES

### DRIFT ft. KYOKA / GRISCHA LICHTENBERGER / YTAC

Wed 7 Nov: Milton Keynes, MK Gallery

Thu 8 Nov: Cambridge, Cambridge Junction

Fri 9 Nov: Birmingham, Vivid Projects, *promoted by Supersonic Festival*

Sat 10 Nov: London, *venue TBC*

Sun 11 Nov: Bexhill, De la Warr Pavilion

Wed 14 Nov: Bradford, Fuse Art Space

Thu 15 Nov: Manchester, The White Hotel, *promoted by Fat Out*

Fri 16 Nov: Bristol, Arnolfini, *promoted by Qu Junktions*

Sat 17 Nov: Plymouth, KARST

This tour is a special commission by Fuse Art Space, below is a quote from them about the thinking behind this special collaboration.

*"We wanted to make something between a traditional exhibition, where an artist creates a work to be experienced by an audience, and an interactive environment where the output is generated by the viewer. DRIFT v1, launched in 2015, was silent - it listened to the audience, and reacted to their sound and movement. Right at the end of the installation, we invited Ren Schofield (who also goes by the name Container) to play inside DRIFT, and it was a bit of an epiphany! The sound system set the audio input on fire, and the bounding crowd stimulated the motion sensors in a way we hadn't seen before. For this commission, we wanted to maximise this experience. We've worked with Kyoka before, and followed Grischa's work for some time - we know first-hand how skilled they are at controlling sound systems in a very precise way, so the pairing of DRIFT, Kyoka and Grischa was obvious."*

#### [OUTLANDS WEBSITE](#)

Facebook: [@outlands.network](#)

Twitter: [@OutlandsNetwork](#)

Youtube: [outlands network](#)

#OutlandsMusic



Supported using public funding by  
**ARTS COUNCIL  
ENGLAND**



## **MK Gallery**

MK Gallery presents free, changing exhibitions of world class art. Renowned for its exhibitions of international contemporary art, the gallery's programme is diversifying to include historical shows alongside the contemporary.

MK Gallery was founded in Central Milton Keynes in 1999 as part of a major theatre and gallery complex. While the theatre has become one of the most successful outside of London, the gallery opened with a solo show by Gilbert & George and has presented a very broad range of exhibitions, from Archigram to Gilberto Zorio via Michael Craig-Martin, Nasreen Mohamedi, Piranesi and Andy Warhol. The gallery frequently tours its exhibitions to international partners across the world, is a regular publisher, and producer of a dynamic and diverse public programme, working closely with local schools and community groups.

MK Gallery is part of the Arts Council's National Portfolio and a member of the Plus Tate network.

MK Gallery, 900 Midsummer Boulevard, Central Milton Keynes, MK9 3QA. [www.mkgallery.org](http://www.mkgallery.org)

## **MK Gallery Supporters**

MK Gallery receives core funding from Milton Keynes Council and Arts Council England.



Supported using public funding by  
**ARTS COUNCIL  
ENGLAND**



## **MK Gallery Expansion Funders**

Arts Council England, The Anson Charitable Trust, The Bernard Sunley Charitable Foundation, The Carrington Charitable Trust, Charles Wolfson Charitable Trust, David Lock Associates, Derek Walker Fund supporters, The Finnis Scott Foundation, Garfield Weston Foundation, The Headley Trust, J Paul Getty Jnr Charitable Trust, Milton Keynes Council, MK Community Foundation, Reuben Foundation, The Sackler Trust, Sir Siegmund Warburg's Voluntary Settlement, South East Midlands Local Enterprise Partnership (SEMLEP), Sylvia Waddilove Foundation UK, The Wolfson Foundation, those that wish to remain anonymous, and with the kind support of Milton Keynes Development Partnership.

## **Press Information**

For interviews, information or images please contact Aimee Holmes, Marketing and Content Manager, MK Gallery. Tel: 01908 558302 / E: [aholmes@mkgallery.org](mailto:aholmes@mkgallery.org)

Ends / Date of issue 29 October 2018