

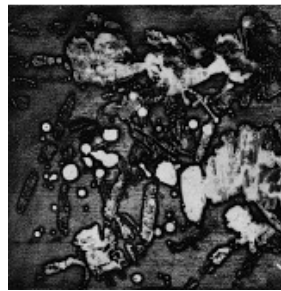
# MK Gallery

## News Release

### States and Spaces: A survey by Project Art Works

9 December 2011 – 8 January 2012

Preview: Friday 9 December 6 – 8pm



The exhibition *States and Spaces* at MK Gallery offers a fascinating insight into the worlds of people who have neurological impairment and their very particular ways of experiencing different spaces. Video, painting, drawing, etching, sound and immersive installations have been selected from a huge body of work produced by Project Art Works, a Hastings-based visual arts organisation founded in 1997, who specialise in collaborating with people with complex needs.

The interest and motivation in much of Project Art Works' practice, is the 'unknowability' of another person's experience of the world, especially if they are unable to communicate using language. Project Art Works conducts practice-led enquiries into the lives of people with complex needs, exploring different forms of response and communication through complex data and a wide range of visual art media.

In *States and Spaces*, unusual viewpoints expose tensions between the grounded engagement of individuals and videos of aerial perspectives, exploring how we perceive and navigate through different environments and terrains. Works include:

**Cathedral of Trees:** An immersive and ethereal sound installation of The Cathedral of Trees in Milton Keynes, from recordings taken during a visit in September 2011 and drawings surveying the land between MK Gallery and this arboreal sanctuary.

**Not Knowing of Another:** A multi-screen video and sound installation reveals synchronized and alternative viewpoints of a short walk by a man with complex needs through an industrial building, over a railway bridge and finally out on to an expansive beach at sunset.

**Physical presences:** Works from Project Art Works' archive reveal a wide range of 'topographies of engagement' from a series of small, intense etchings to large, expansive paintings, via responses to constructed spaces and built environments.

The exhibition incorporates work from a long-term project between MK Gallery and Project Art Works, centering on the exploration of constructed and open space, referencing the urban grid of Milton Keynes.

## Seminar: Extreme Insight into Built Space

9 December 2011

2-5pm / Places free but must be pre-booked on 01908 676 900

This seminar will provide a forum for interaction and exchange about our collective experience of space, as well as current paradigms of inclusivity in the built environment. Contributors include Paul Shephard, a qualified architect, writer and lecturer, and author of *What is Architecture?*; Kate Adams, visual artist and co-founder and Director of Project Art Works who initiates collaborative projects with people with neurological impairment, their families and support agencies; Dr Peter Baker, Consultant Clinical Psychologist for Sussex Partnership NHS Foundation Trust, whose clinical and published work is in the area of challenging behaviour and intellectual disability; and young adults with autism who were involved in the MK Gallery and Project Art Works collaboration. Visit [www.mkgallery.org](http://www.mkgallery.org) for further details.

### Preview: Friday 9 December 6-8pm

All welcome. Speeches at 6pm by Anthony Spira, Director, MK Gallery, Iain Stewart, MP for Milton Keynes South, and Sally Abbott, Director Arts Council South East.

### Friday Night Films

Project Art Works have selected the following films for inclusion in MK Gallery's regular Friday Night Film programme, presented by MK Gallery in association with *Independent Cinema MK*:

16 December: *The Enigma of Kaspar Hauser* (1974, Dir. Werner Herzog)

23 December: *Black Sun* (2005, Dir. Gary Tarn)

30 December: *The Black Balloon* (2008, Dir. Elissa Down)

2 January: *Gallivant* (1996, Dir. Andrew Kotting)

### Supporters

Exhibition supported by Arts Council England.



projectart works

### MK Gallery Supporters

MK Gallery receives core funding from Milton Keynes Council and Arts Council England South East.



Supported by  
**ARTS COUNCIL  
ENGLAND**



### MK Gallery

MK Gallery, 900 Midsummer Boulevard, Central Milton Keynes, MK9 3QA.

Open Tuesday-Friday 12-8pm, Saturday 11am-8pm, Sunday 11am-5pm. Admission free.

[www.mkgallery.org](http://www.mkgallery.org)

### Further information

For press interviews, information or images please contact: Katharine Sorensen, Communications Director, MK Gallery T: +44 (0)1908 558318 / E: [ksorensen@mkgallery.org](mailto:ksorensen@mkgallery.org)

**Ends. Date of issue:** 28 November 2011