



I'm going to  
the cinema  
at MK Gallery!

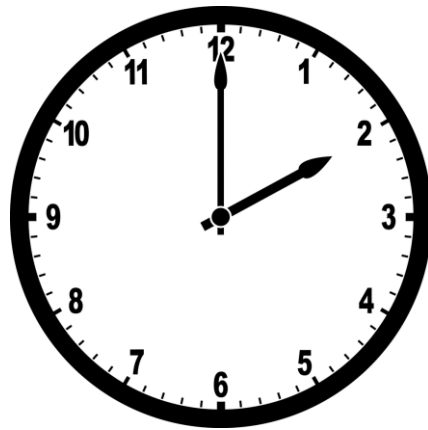


Photo: Janie Airey Art Fund 2021

On Friday 30<sup>th</sup> December, I'm going to the cinema at MK Gallery.

This is MK Gallery.

I will use this main entrance.

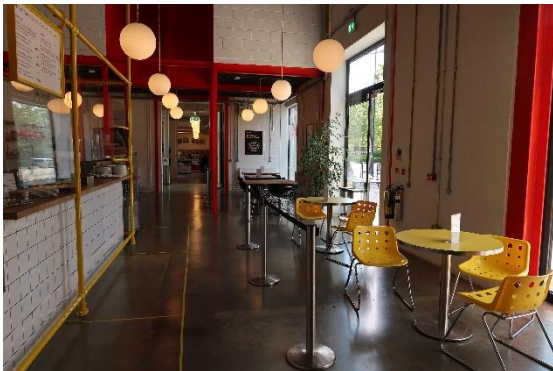


The film I'm going to see starts at 2pm.



When I arrive at MK Gallery, I will need to go to the front desk to collect my ticket.

I might have to wait in a queue but it won't take long.



If I want popcorn or sweets, I can get some from the café or I can bring my own food.

I might be offered a bowl for my food so my packets don't make a lot of noise.



Next, I will go to the cinema which is in the Sky Room Auditorium on the second floor.

I can use the lift or the stairs to get to the cinema.



When I get to the cinema, I will find a seat and sit down.



I'm going to see a film called:

**Roald Dahl's Matilda the Musical.**



This film is about a girl called Matilda Wormwood. She is clever, has a big imagination and loves to read books. She lives with her parents, who are loud, selfish, and unkind- very different to Matilda!

When she starts school and meets the mean Miss Trunchbull, she takes a stand and starts to think up mischievous little ways she can be rebellious and change her life for the better.



If I want to, I can watch a trailer of the film on the internet before I go to the cinema.

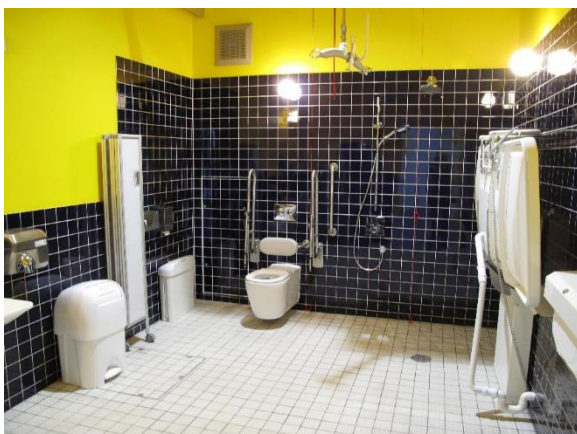


Some sensory aids are available and I can also bring my own.



If I need the toilet, I will leave the Sky Room and turn left.

I will find the toilets at the end of this corridor. It will only take me 1 minute to get there.



There is a changing places toilet on the ground floor if I need it. A member of staff can show me the way.

This is what it looks like.

**The End**

When the film has finished everyone will leave the cinema.



Supported using public funding by  
**ARTS COUNCIL  
ENGLAND**

